

Trees

Cherry 'Okame'



Bloom Time: April, May
Flowering: Blooming
Growth Rate: Fast growth rate
Light requirements: Full Sun
Plant Group: Tree
Plant Type: Deciduous
Size at Maturity: 20 - 30 ft

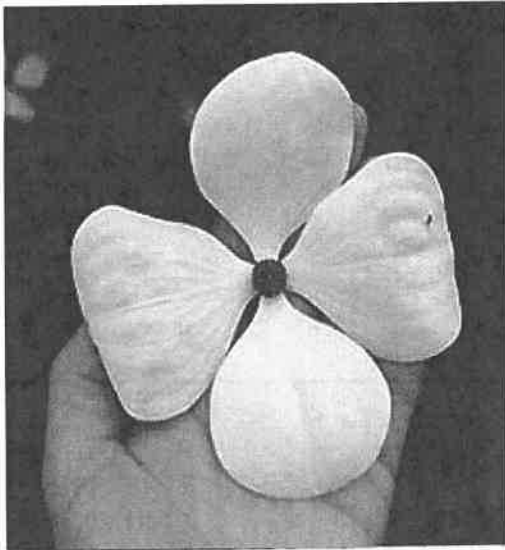
Dogwood, Appalachian Spring



Flowering: Blooming
Growth Rate: Fast growth rate
Light requirements: Partial Sun and shade
Plant Group: Tree
Plant Type: Deciduous
Size at Maturity: 10 - 20 ft

^C
BRICKMAN Group
DUKE REALTY

Dogwood, Kousa (Venus)



Bloom Time: June

Flowering: Blooming

Growth Rate: Moderate growth rate

Light requirements: Full Sun, Partial Sun and shade

Plant Group: Tree

Plant Type: Deciduous

Size at Maturity: 20 - 30 ft

Dogwood, White Flowering



Flowering: Blooming

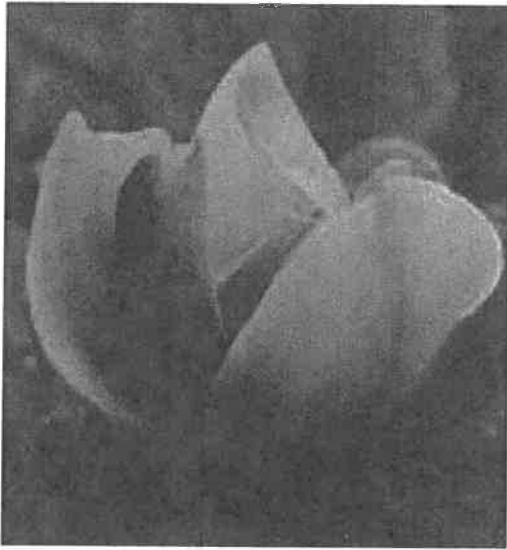
Growth Rate: Fast growth rate

Plant Group: Good wildlife plants, Tree

Plant Type: Deciduous

Size at Maturity: 10 - 20 ft

Magnolia Jane



Bloom Time: May, June, July, August, September

Flowering: Blooming

Growth Rate: Moderate growth rate

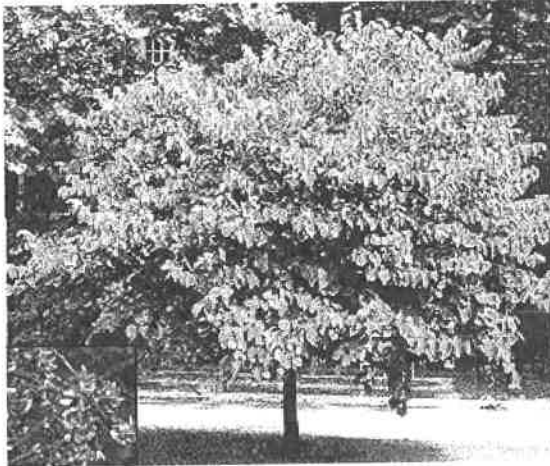
Light requirements: Full Sun, Partial Sun and shade

Plant Group: Shrub, Tree

Plant Type: Deciduous

Size at Maturity: 10 - 20 ft

Red Bud



Flowering: Blooming

Growth Rate: Moderate growth rate

Plant Group: Tree

Plant Type: Deciduous

Size at Maturity: 20 - 30 ft

Red Bud Forest Pansy



Bloom Time: May

Flowering: Blooming

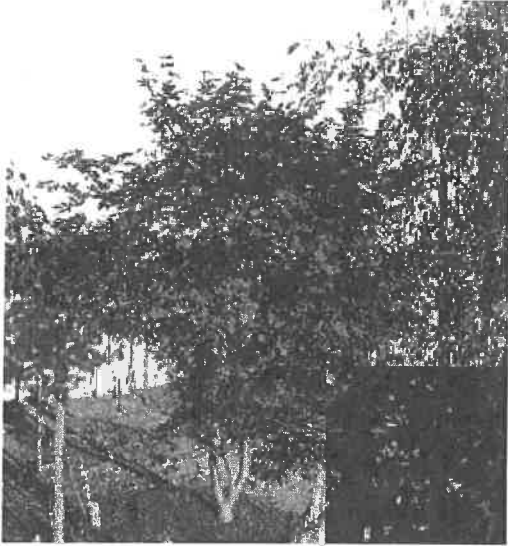
Growth Rate: Moderate growth rate

Plant Group: Tree

Plant Type: Deciduous

Size at Maturity: 20 - 30 ft

Maple, Japanese Red



Flowering: Non-blooming

Growth Rate: Moderate growth rate

Light requirements: Full Sun, Partial Sun
and shade

Plant Group: Shrub, Tree

Plant Type: Deciduous

Size at Maturity: 10 - 20 ft



©1998 HorticoPIA, Inc.

Carpinus betulus
Hornbeam, European

<i>Carpinus betulus</i>		Species
Betulaceae		Hornbeam, European
Birch		
Summer Leaf	Green	Height 25' to 50' / 7.60m to 15.20m
Fall Leaf	Yellow, Attractive fall colors	Spread 25' to 35' / 7.60m to 10.60m
Bloom Color	White	Exposure Full shade to full sun
Bloom Time	Spring	Moisture Grows in moist soil
Fruit Color	Brown	Soil & Climate Soil Condition: Acidic, Alkaline, Clay, Loamy, Neutral, Sandy, Well drained, Acidic, Alkaline; Does not tolerate salt; Drought tolerant, Tolerates wetness
Growth rate	Slow growth rate	
Attributes and Features		
Hardiness Range	<ul style="list-style-type: none"> - Not North American native - Moderately flammable - Inconspicuous flowers or blooms - Inconspicuous fruit - Fruit is persistent - Multiple trunks - Trunk has no thorns 	<ul style="list-style-type: none"> - Trunk is showy - Can be trained to single trunk
	4A to 7A -34.4 to -15.0°C	
HORTICOPIA® Trees, Shrubs and Groundcovers II		©1998 HorticoPIA, Inc.

- ✂ **Golden Currant; Clove Currant** (*Ribes odoratum*)
- ✂ **Missouri Gooseberry** (*Ribes missouriense*)
- ✂ **Pasture Rose** (*Rosa carolina*)
- ✂ **Blackberry; Dewberry; Black Raspberry** (*Rubus* sp.)
- ✂ **Prairie Willow** (*Salix humilis*)
- ✂ **Red-berried Elder** (*Sambucus racemosa*)
- ✂ **Elderberry** (*Sambucus canadensis*)
- ✂ **Bladdernut** (*Staphylea trifolia*)
- ✂ **American Snowbell** (*Styrax americana*)
- ✂ **Arrowwood** (*Viburnum dentatum*)
- ✂ **Nannyberry viburnum** (*Viburnum lentago*)
- ✂ **Rusty Blackhaw** (*Viburnum rufidulum*)
- ✂ **Black Haw Viburnum** (*Viburnum prunifolium*)

Trees

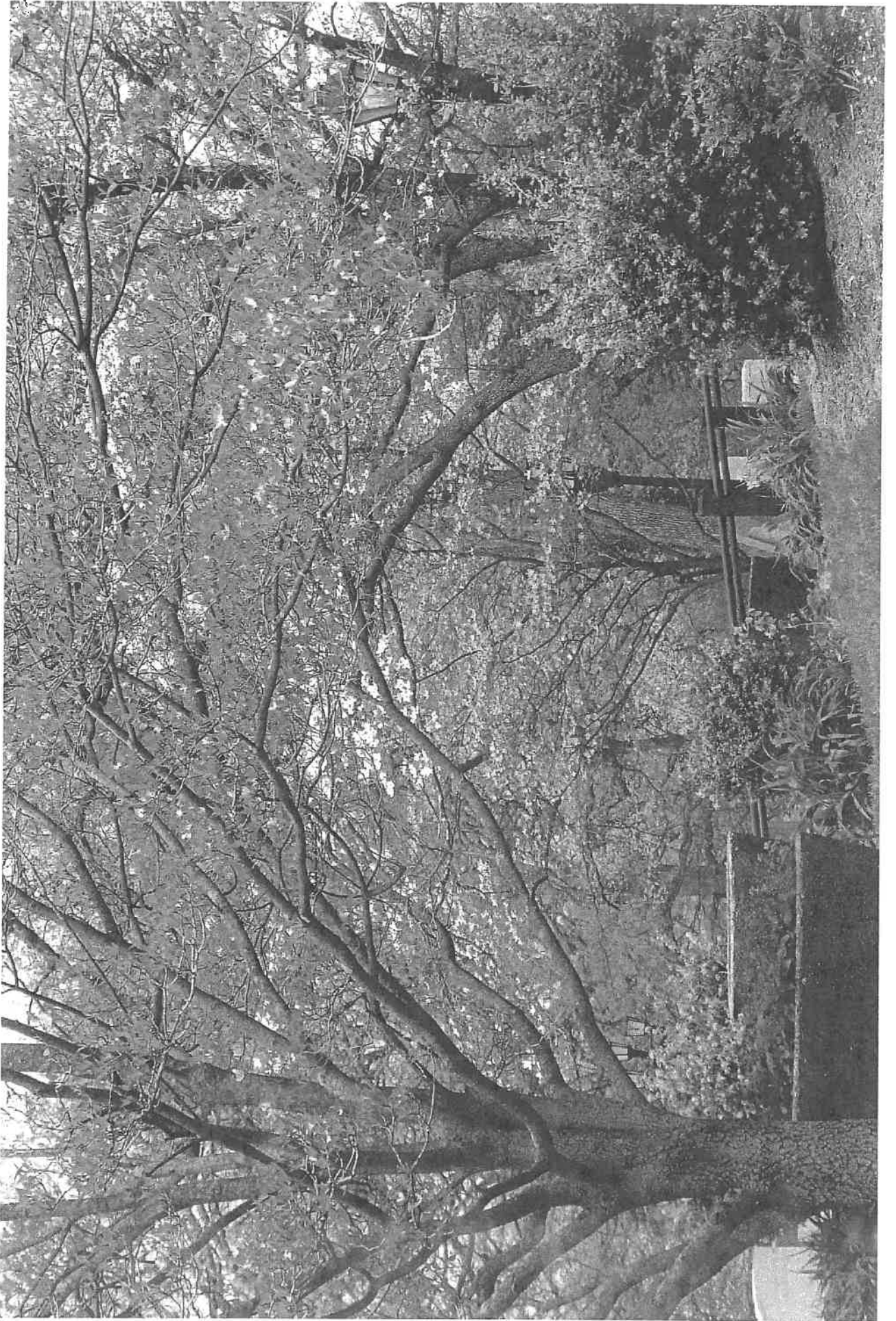
- ✂ **Red Maple** (*Acer rubrum*)
- ✂ **Red Buckeye** (*Aesculus pavia*)
- ✂ **Ohio Buckeye** (*Aesculus glabra*)
- ✂ **Pawpaw** (*Asimina triloba*)
- ✂ **River Birch** (*Betula nigra*)
- ✂ **American Hornbeam** (*Carpinus caroliniana*)
- ✂ **Shagbark hickory** (*Carya ovata*)
- ✂ **Eastern Redbud** (*Cercis canadensis*)
- ✂ **Fringetree** (*Chionanthus virginicus*)
- ✂ **Yellowwood** (*Cladrastis kentukea*)
- ✂ **Pagoda Dogwood** (*Cornus alternifolia*)
- ✂ **Flowering Dogwood** (*Cornus florida*)
- ✂ **Roughleaf Dogwood** (*Cornus drummondii*)
- ✂ **Parsley Hawthorn** (*Crataegus marshallii*)
- ✂ **Downy Hawthorn** (*Crataegus mollis*)
- ✂ **Kentucky Coffeetree** (*Gymnocladus dioica*)
- ✂ **American Holly** (*Ilex opaca*)
- ✂ **Black Gum** (*Nyssa sylvatica*)
- ✂ **Black Cherry** (*Prunus serotina*)



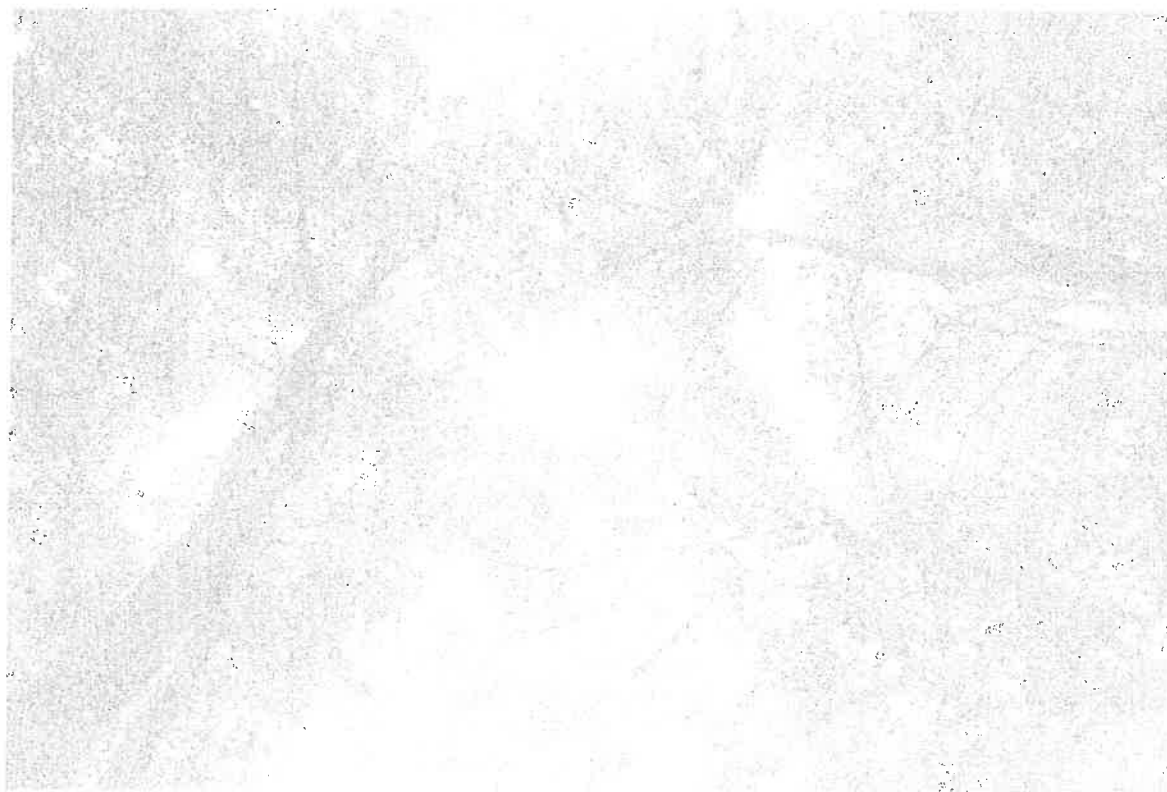
©1998Horticopia, Inc.

Malus X arnoldiana

<i>Malus X arnoldiana</i>		Species
Rosaceae	Crabapple	
Rose		
		Height 15' to 25' / 4.60m to 7.60m
		Spread 15' to 25' / 4.60m to 7.60m
Summer Leaf	Green	Exposure Full sun
Fall Leaf	Yellow	Moisture Grows in moist soil
Bloom Color	Pink	Soil & Climate Soil Condition: Acidic, Alkaline, Clay, Loamy, Neutral, Sandy, Well drained, Acidic, Alkaline; Low salt tolerance; Tolerates wetness, Tolerates moderate drought
Bloom Time	Spring	
Fruit Color	Red, Yellow	
Growth rate	Average growth rate	
	Attributes and Features	
	- Not North American native	- Trunk has no thorns
	- Fragrant flowers	- Can be trained to single trunk
	- Attractive flowers or blooms	
	- Fruit is persistent	
	- Attractive fruit	
Hardiness Range	- Multiple trunks	
3B to 8A	- Trunk is not showy	
-37.2 to -9.4°C		
HORTICOPIA® Trees, Shrubs and Groundcovers II		©1998 Horticopia, Inc.



APPENDIX D-6





Shrubs

Dogwood, Red-Twig



Bloom Time: May, June
Flowering: Blooming
Growth Rate: Fast growth rate
Plant Group: Good wildlife plants, Shrub
Plant Type: Deciduous
Size at Maturity: 4 - 5 ft

Barberry, Crimson Pygmy



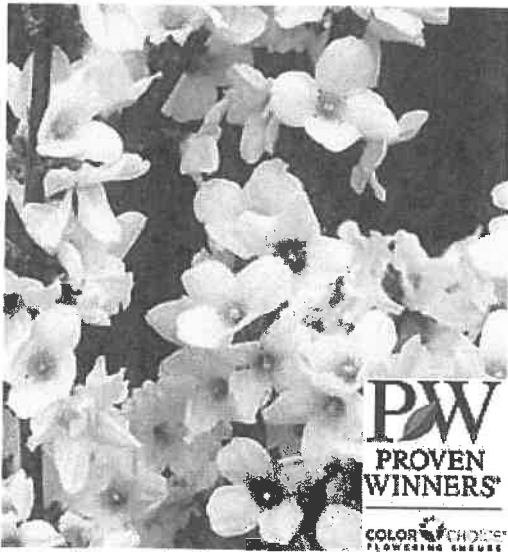
Bloom Time: April
Flowering: Blooming
Growth Rate: Moderate growth rate
Light requirements: Full Sun, Partial Sun and shade
Plant Group: Shrub
Plant Type: Deciduous
Size at Maturity: 2 - 3 ft

Barberry – Royal Burgundy



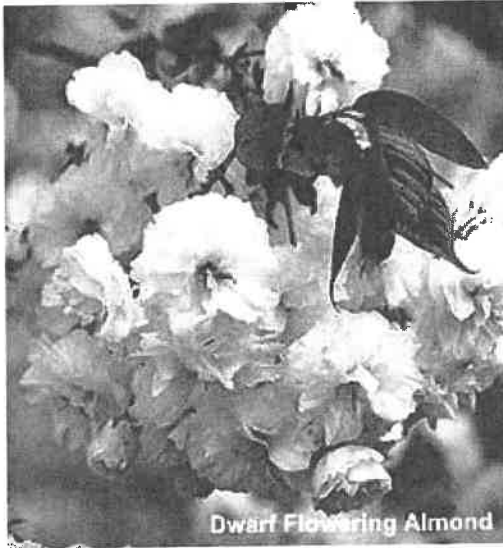
Bloom Time: April
Flowering: Blooming
Growth Rate: Fast growth rate
Light requirements: Full Sun
Plant Group: Shrub
Plant Type: Deciduous
Size at Maturity: 1 - 2 ft

Forsythia, Show Off



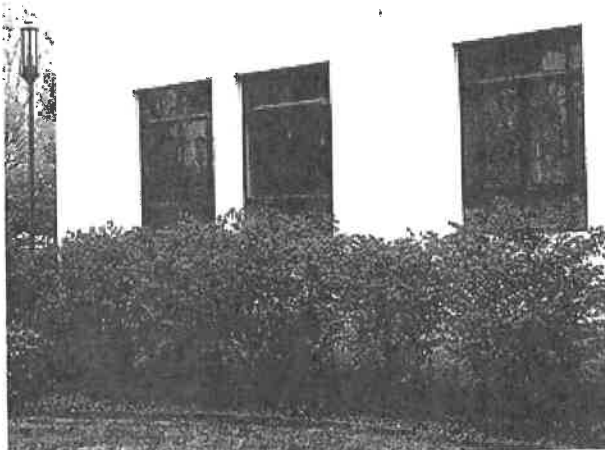
Bloom Time: April
Flowering: Blooming
Growth Rate: Fast growth rate
Light requirements: Full Sun, Partial Sun and shade
Plant Group: Shrub
Plant Type: Deciduous
Size at Maturity: 4 - 5 ft

Almond, Pink Flowering



Bloom Time: May
Flowering: Blooming
Growth Rate: Fast growth rate
Light requirements: Full Sun, Partial Sun and shade
Plant Group: Shrub
Plant Type: Deciduous
Size at Maturity: 4 - 5 ft

Burning Bush



Growth Rate: Fast growth rate
Plant Group: Shrub
Plant Type: Deciduous
Size at Maturity: 6 - 10 ft



©2004 Hortocopia, Inc.

Berberis thunbergii 'Crimson Pygmy'

***Berberis thunbergii* 'Crimson Pygmy'**

Japanese Barberry

Berberidaceae (Barberry)

Nomenclature: Royal Hort. Society

Type Shrub, woody plant

Hardy range 4A to 7B

Height 18" to 24" / 45cm to 60cm

Spread 36" to 4' / 90cm to 1.20m

Growth rate Slow

Form Rounded

Exposure Partial shade or partial sun to full sun

Persistence Semi-evergreen

Bloom Color Yellow

Bloom Time Spring

Environment

This plant tolerates some drought.

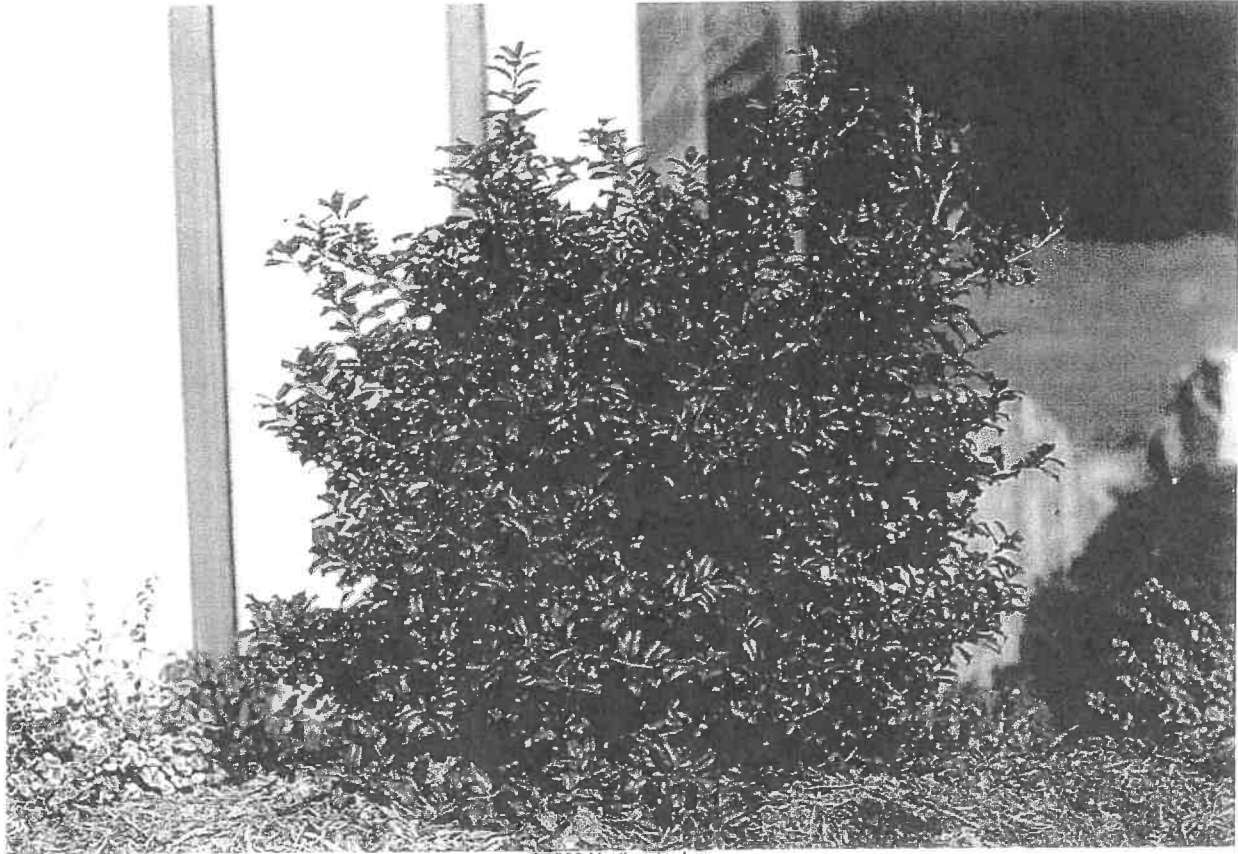
This plant will grow in dry soil.

Suitable soil is well-drained/loamy, sandy or clay.

The preference is an acidic to alkaline (less than 6.8 to more than 7.7) soil.

Leaf Color Purple

Fall Color Orange, red and yellow



©2002 Hortocopia, Inc.

Ilex x meserveae 'Mesod (China Boy®)'

ESTIBLE

<i>Ilex x meserveae</i> 'Mesog (China Girl®)'		Nomenclature: Royal Hort. Society
Blue Holly, Meserve Hybrid Holly		
Aquifoliaceae (Holly)		
Type	Shrub	
Hardy range	6A to 8A	
Height	5' to 10' / 1.60m to 3.00m	
Spread	4' to 8' / 1.20m to 2.40m	
Form	Oval and pyramidal	
Exposure	Partial shade or partial sun to full sun	
Persistence	Evergreen	
Environment		
This plant tolerates drought.		
This plant will grow in very dry soil.		
Suitable soil is well-drained/loamy, sandy or clay.		
The pH preference is an acidic to slightly alkaline (less than 6.8 to 7.7) soil.		
Bloom Color	White	
Bloom Time	Spring	
The flowers are inconspicuous.		